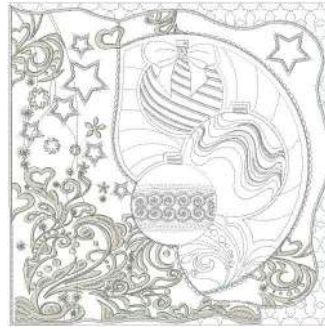




- 1. Pink Cream (Mar:1227)
- 2. Lemon Cream (Mar:1006)
- 3. Dolphin Blue (Mar:1198)
- 4. Lemon Cream (Mar:1006)
- 5. Torquoise Blue (Mar:1059)
- 6. Lemon Cream (Mar:1006)
- 7. Bluish Purple (Mar:1085)
- 8. Lemon Cream (Mar:1006)
- 9. Off White (Mar:1181)
- 10. Sage Cream (Mar:1182)
- 11. Lemon Cream (Mar:1006)
- 12. Wheaten Green (Mar:1092)
- 13. Silver Fox (Mar:1210)
- 14. Off White (Mar:1181)

Design1-10x10.pes

9.66x9.65 inches; 58,354 stitches
14 thread changes; 9 colors



- 1. Pink Cream (Mar:1227)
- 2. Lemon Cream (Mar:1006)
- 3. Dolphin Blue (Mar:1198)
- 4. Lemon Cream (Mar:1006)
- 5. Torquoise Blue (Mar:1059)
- 6. Lemon Cream (Mar:1006)
- 7. Bluish Purple (Mar:1085)
- 8. Lemon Cream (Mar:1006)
- 9. Off White (Mar:1181)
- 10. Sage Cream (Mar:1182)
- 11. Lemon Cream (Mar:1006)
- 12. Wheaten Green (Mar:1092)
- 13. Silver Fox (Mar:1210)
- 14. Off White (Mar:1181)

Design1-12x12.pes

11.63x11.62 inches; 70,041 stitches
14 thread changes; 9 colors



- 1. Pink Cream (Mar:1227)
- 2. Lemon Cream (Mar:1006)
- 3. Dolphin Blue (Mar:1198)
- 4. Lemon Cream (Mar:1006)
- 5. Torquoise Blue (Mar:1059)
- 6. Lemon Cream (Mar:1006)
- 7. Bluish Purple (Mar:1085)
- 8. Wheaten Green (Mar:1092)
- 9. Lemon Cream (Mar:1006)
- 10. Off White (Mar:1181)
- 11. Sage Cream (Mar:1182)
- 12. Lemon Cream (Mar:1006)
- 13. Wheaten Green (Mar:1092)
- 14. Silver Fox (Mar:1210)
- 15. Off White (Mar:1181)

Design1-13x13.pes

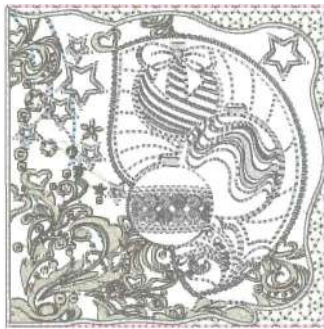
13.01x13.00 inches; 78,738 stitches
15 thread changes; 9 colors



- 1. Pink Cream (Mar:1227)
- 2. Lemon Cream (Mar:1006)
- 3. Dolphin Blue (Mar:1198)
- 4. Lemon Cream (Mar:1006)
- 5. Torquoise Blue (Mar:1059)
- 6. Lemon Cream (Mar:1006)
- 7. Bluish Purple (Mar:1085)
- 8. Lemon Cream (Mar:1006)
- 9. Off White (Mar:1181)
- 10. Sage Cream (Mar:1182)
- 11. Lemon Cream (Mar:1006)
- 12. Wheaten Green (Mar:1092)
- 13. Silver Fox (Mar:1210)
- 14. Off White (Mar:1181)

Design1-16x16.pes

15.57x15.56 inches; 95,937 stitches
14 thread changes; 9 colors



- 1. Pink Cream (Mar:1227)
- 2. Lemon Cream (Mar:1006)
- 3. Dolphin Blue (Mar:1198)
- 4. Lemon Cream (Mar:1006)
- 5. Torquoise Blue (Mar:1059)
- 6. Lemon Cream (Mar:1006)
- 7. Bluish Purple (Mar:1085)
- 8. Wheaten Green (Mar:1092)
- 9. Lemon Cream (Mar:1006)
- 10. Silver Fox (Mar:1210)
- 11. Sage Cream (Mar:1182)
- 12. Lemon Cream (Mar:1006)
- 13. Wheaten Green (Mar:1092)
- 14. Silver Fox (Mar:1210)
- 15. Off White (Mar:1181)

Design1-4x4.pes

3.76x3.75 inches; 23,847 stitches
15 thread changes; 9 colors



- 1. Pink Cream (Mar:1227)
- 2. Lemon Cream (Mar:1006)
- 3. Dolphin Blue (Mar:1198)
- 4. Lemon Cream (Mar:1006)
- 5. Torquoise Blue (Mar:1059)
- 6. Lemon Cream (Mar:1006)
- 7. Bluish Purple (Mar:1085)
- 8. Wheaten Green (Mar:1092)
- 9. Lemon Cream (Mar:1006)
- 10. Silver Fox (Mar:1210)
- 11. Sage Cream (Mar:1182)
- 12. Lemon Cream (Mar:1006)
- 13. Wheaten Green (Mar:1092)
- 14. Silver Fox (Mar:1210)
- 15. Off White (Mar:1181)

Design1-5x5.pes

4.94x4.93 inches; 29,966 stitches
15 thread changes; 9 colors



- 1. Pink Cream (Mar:1227)
- 2. Lemon Cream (Mar:1006)
- 3. Dolphin Blue (Mar:1198)
- 4. Lemon Cream (Mar:1006)
- 5. Torquoise Blue (Mar:1059)
- 6. Lemon Cream (Mar:1006)
- 7. Bluish Purple (Mar:1085)
- 8. Wheaten Green (Mar:1092)
- 9. Lemon Cream (Mar:1006)
- 10. Silver Fox (Mar:1210)
- 11. Sage Cream (Mar:1182)
- 12. Lemon Cream (Mar:1006)
- 13. Wheaten Green (Mar:1092)
- 14. Silver Fox (Mar:1210)
- 15. Off White (Mar:1181)

Design1-6x6.pes

5.72x5.72 inches; 34,460 stitches
15 thread changes; 9 colors



- 1. Pink Cream (Mar:1227)
- 2. Lemon Cream (Mar:1006)
- 3. Dolphin Blue (Mar:1198)
- 4. Lemon Cream (Mar:1006)
- 5. Torquoise Blue (Mar:1059)
- 6. Lemon Cream (Mar:1006)
- 7. Bluish Purple (Mar:1085)
- 8. Lemon Cream (Mar:1006)
- 9. Off White (Mar:1181)
- 10. Sage Cream (Mar:1182)
- 11. Lemon Cream (Mar:1006)
- 12. Wheaten Green (Mar:1092)
- 13. Silver Fox (Mar:1210)
- 14. Off White (Mar:1181)

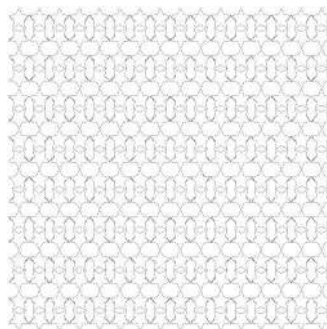
Design1-8x8.pes

7.69x7.69 inches; 46,745 stitches
14 thread changes; 9 colors



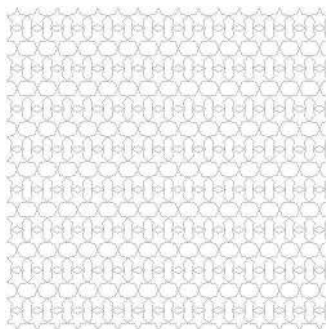
- 1. Pink Cream (Mar:1227)
- 2. Lemon Cream (Mar:1006)
- 3. Dolphin Blue (Mar:1198)
- 4. Lemon Cream (Mar:1006)
- 5. Turquoise Blue (Mar:1059)
- 6. Lemon Cream (Mar:1006)
- 7. Bluish Purple (Mar:1085)
- 8. Lemon Cream (Mar:1006)
- 9. Off White (Mar:1181)
- 10. Sage Cream (Mar:1182)
- 11. Lemon Cream (Mar:1006)
- 12. Wheaten Green (Mar:1092)
- 13. Silver Fox (Mar:1210)
- 14. Off White (Mar:1181)

Design1-9x9.pes
8.48x8.47 inches; 51,150 stitches
14 thread changes; 9 colors



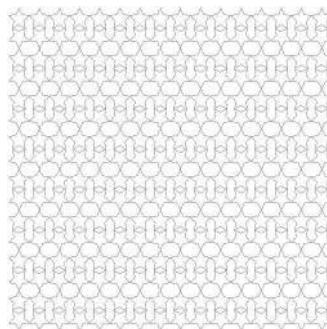
- 1. Sage Cream (Mar:1182)

Design10-10x10.pes
9.65x9.65 inches; 15,376 stitches
1 thread changes; 1 colors



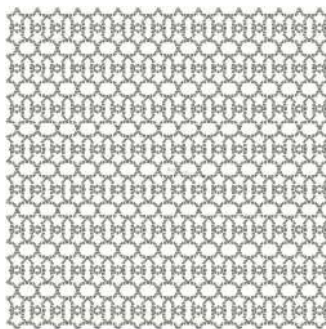
- 1. Sage Cream (Mar:1182)

Design10-13x13.pes
12.99x12.99 inches; 20,499 stitches
1 thread changes; 1 colors



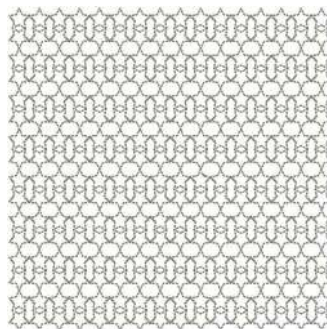
- 1. Sage Cream (Mar:1182)

Design10-16x16.pes
15.55x15.55 inches; 25,617 stitches
1 thread changes; 1 colors



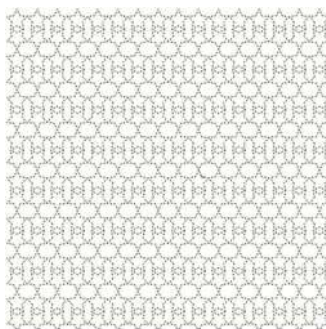
- 1. Sage Cream (Mar:1182)

Design10-4x4.pes
3.74x3.74 inches; 10,253 stitches
1 thread changes; 1 colors



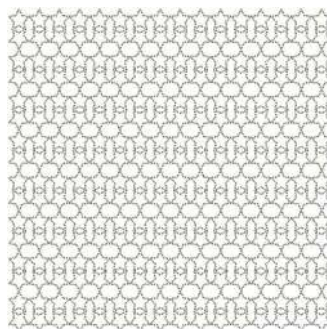
- 1. Sage Cream (Mar:1182)

Design10-5x5.pes
4.92x4.92 inches; 10,253 stitches
1 thread changes; 1 colors



- 1. Sage Cream (Mar:1182)

Design10-6x6.pes
5.71x5.71 inches; 10,255 stitches
1 thread changes; 1 colors



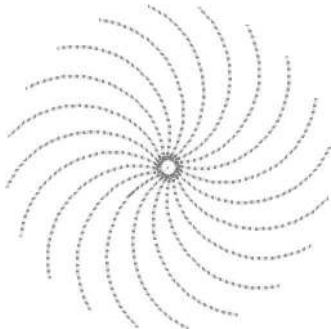
- 1. Sage Cream (Mar:1182)

Design10-8x8.pes
7.68x7.68 inches; 15,373 stitches
1 thread changes; 1 colors



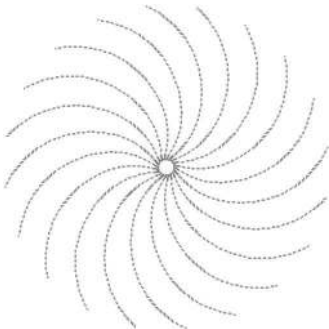
■ 1. Sage Cream (Mar:1182)

Design10-9x9.pes
8.46x8.46 inches; 15,376 stitches
1 thread changes; 1 colors



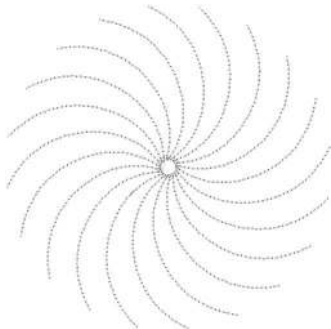
■ 1. Silver Fox (Mar:1210)

Design11-4x4.pes
3.74x3.74 inches; 1,313 stitches
1 thread changes; 1 colors



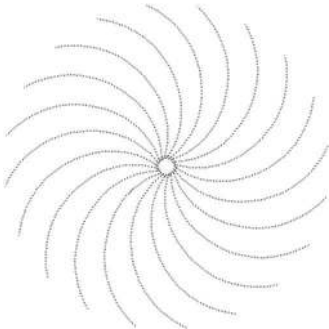
■ 1. Silver Fox (Mar:1210)

Design11-5x5.pes
4.92x4.92 inches; 1,671 stitches
1 thread changes; 1 colors



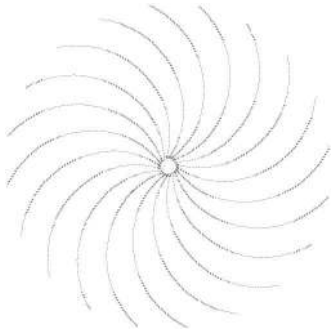
■ 1. Silver Fox (Mar:1210)

Design11-6x6.pes
5.71x5.71 inches; 1,871 stitches
1 thread changes; 1 colors




■ 1. Silver Fox (Mar:1210)

Design11-8x8.pes
7.68x7.68 inches; 2,471 stitches
1 thread changes; 1 colors



■ 1. Silver Fox (Mar:1210)

Design11-9x9.pes
8.46x8.46 inches; 2,711 stitches
1 thread changes; 1 colors



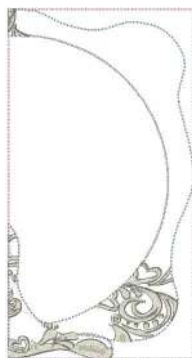
- 1. Copper Salmon (Mar:1033)
- 2. Ripe Lemon (Mar:1004)
- 3. Dolphin Blue (Mar:1198)
- 4. Ripe Lemon (Mar:1004)
- 5. Torquoise Blue (Mar:1059)
- 6. Ripe Lemon (Mar:1004)
- 7. Bluish Purple (Mar:1085)
- 8. Sage Cream (Mar:1182)

Design12-5x7.pes
3.79x7.68 inches; 23,313 stitches
8 thread changes; 6 colors



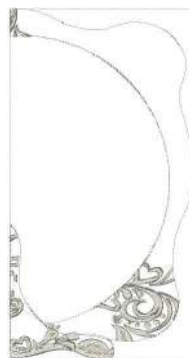
- 1. Copper Salmon (Mar:1033)
- 2. Ripe Lemon (Mar:1004)
- 3. Dolphin Blue (Mar:1198)
- 4. Ripe Lemon (Mar:1004)
- 5. Torquoise Blue (Mar:1059)
- 6. Ripe Lemon (Mar:1004)
- 7. Bluish Purple (Mar:1085)
- 8. Sage Cream (Mar:1182)

Design12-6x10.pes
4.76x9.65 inches; 29,241 stitches
8 thread changes; 6 colors



- 1. Pink Cream (Mar:1227)
- 2. Dolphin Blue (Mar:1198)
- 3. Lemon Cream (Mar:1006)
- 4. Turquoise Blue (Mar:1059)
- 5. Lemon Cream (Mar:1006)
- 6. Bluish Purple (Mar:1085)
- 7. Sage Cream (Mar:1182)

Design13-5x7.pes
4.04x7.69 inches; 6,397 stitches
7 thread changes; 6 colors



- 1. Pink Cream (Mar:1227)
- 2. Dolphin Blue (Mar:1198)
- 3. Lemon Cream (Mar:1006)
- 4. Turquoise Blue (Mar:1059)
- 5. Lemon Cream (Mar:1006)
- 6. Bluish Purple (Mar:1085)
- 7. Sage Cream (Mar:1182)

Design13-6x10.pes
5.08x9.65 inches; 8,047 stitches
7 thread changes; 6 colors



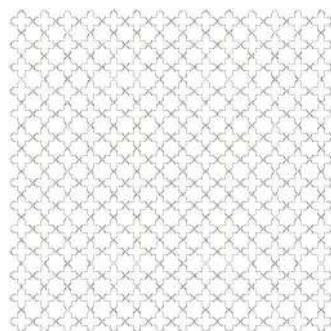
- 1. Sage Cream (Mar:1182)
- 2. Bluish Purple (Mar:1085)
- 3. Turquoise Blue (Mar:1059)
- 4. Silver Fox (Mar:1210)

Design14-5x7.pes
4.93x7.68 inches; 12,580 stitches
4 thread changes; 4 colors



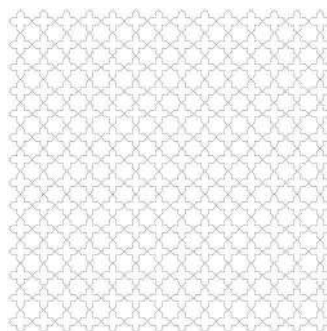
- 1. Sage Cream (Mar:1182)
- 2. Bluish Purple (Mar:1085)
- 3. Turquoise Blue (Mar:1059)
- 4. Silver Fox (Mar:1210)

Design14-6x10.pes
6.20x9.65 inches; 14,326 stitches
4 thread changes; 4 colors



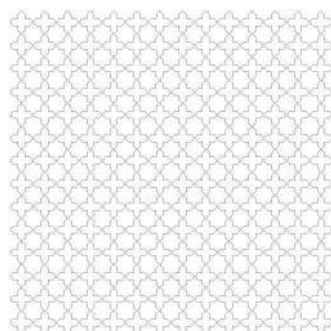
- 1. Sage Cream (Mar:1182)

Design15-10x10.pes
9.65x9.65 inches; 12,591 stitches
1 thread changes; 1 colors



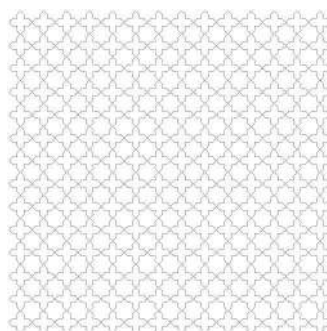
- 1. Sage Cream (Mar:1182)

Design15-12x12.pes
11.61x11.61 inches; 16,511 stitches
1 thread changes; 1 colors



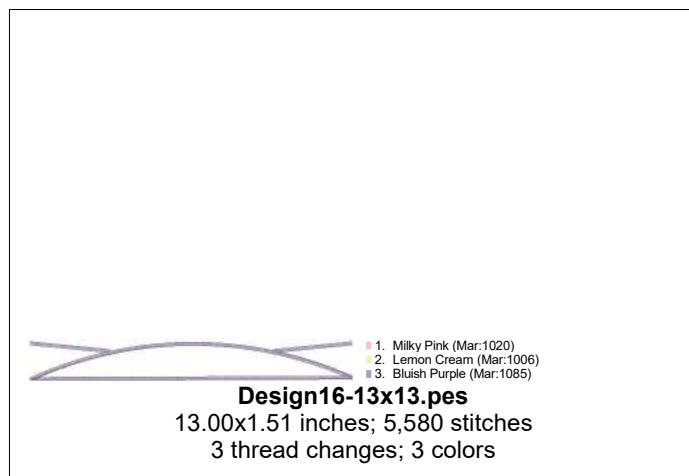
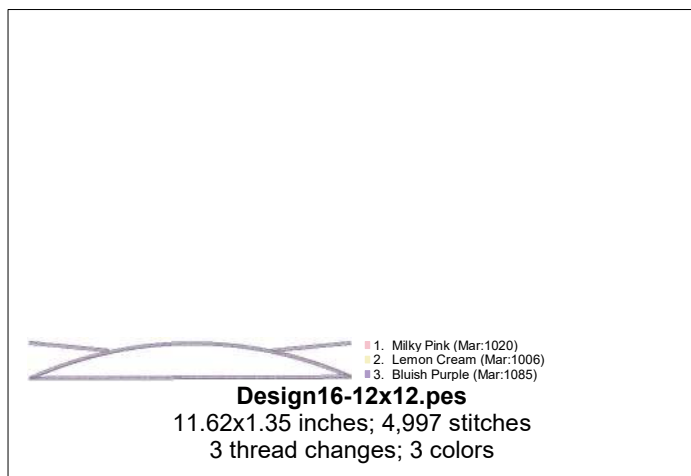
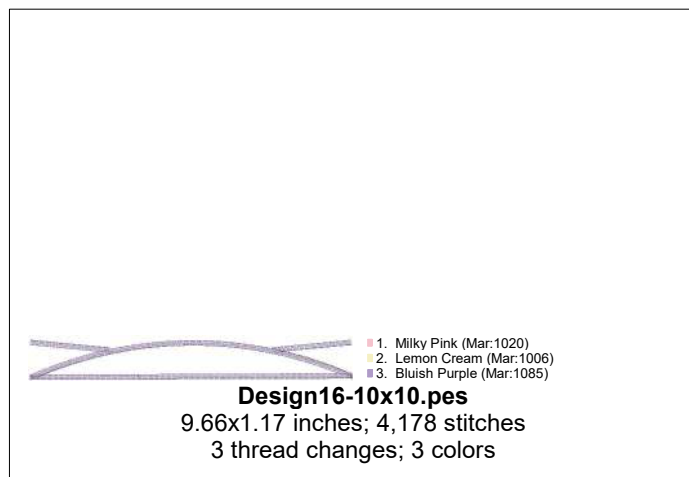
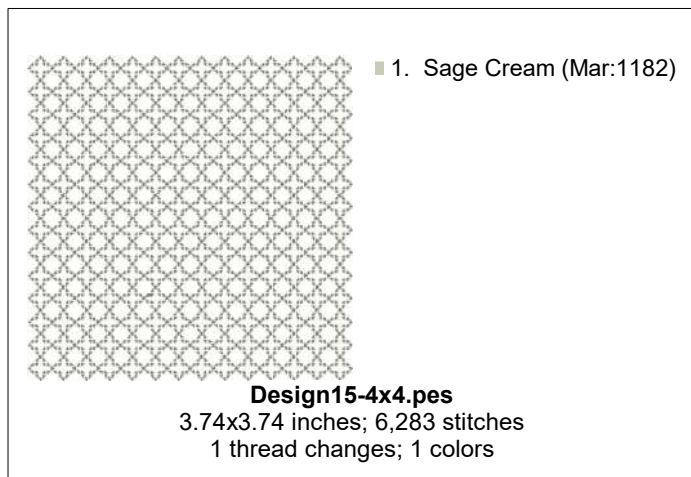
- 1. Sage Cream (Mar:1182)

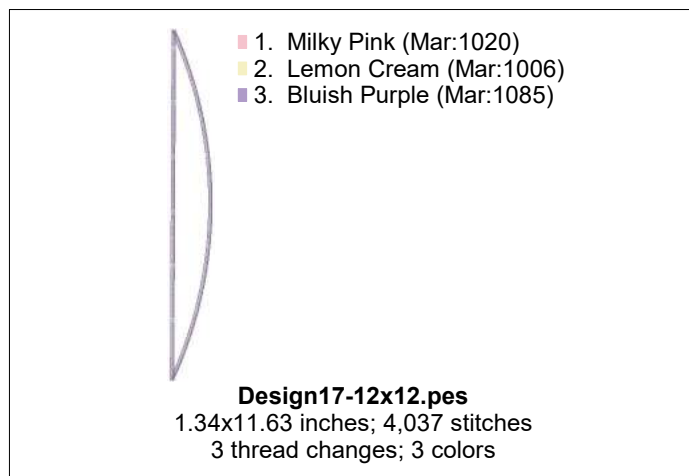
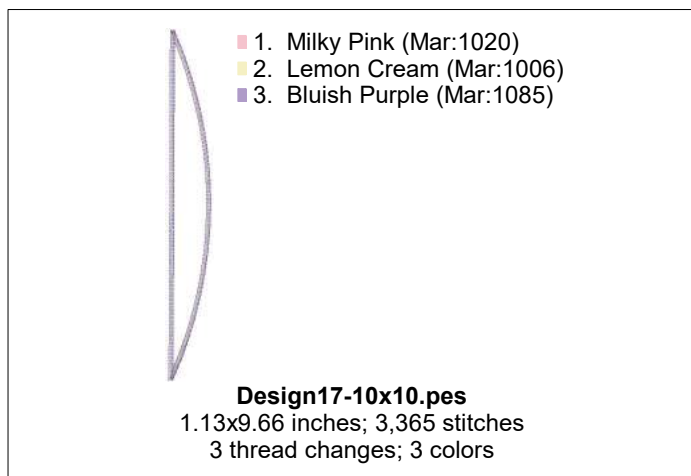
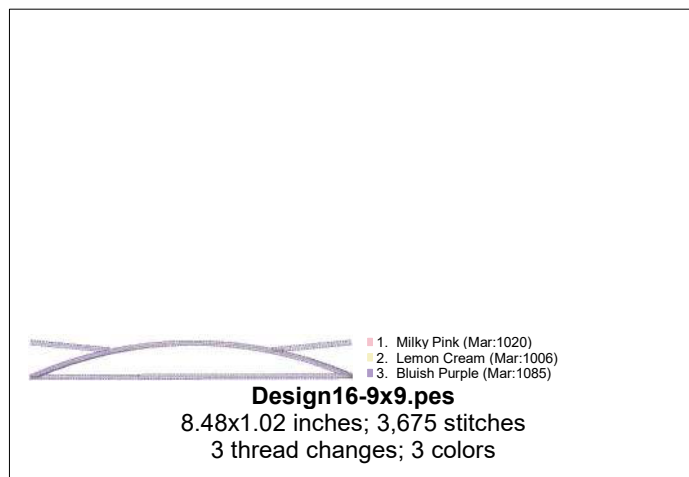
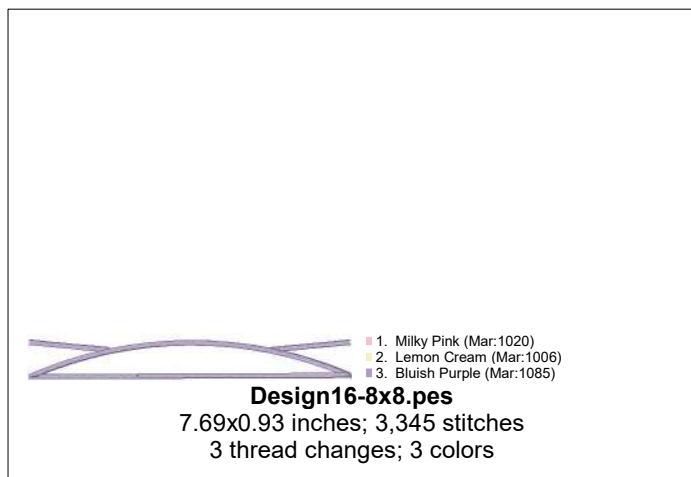
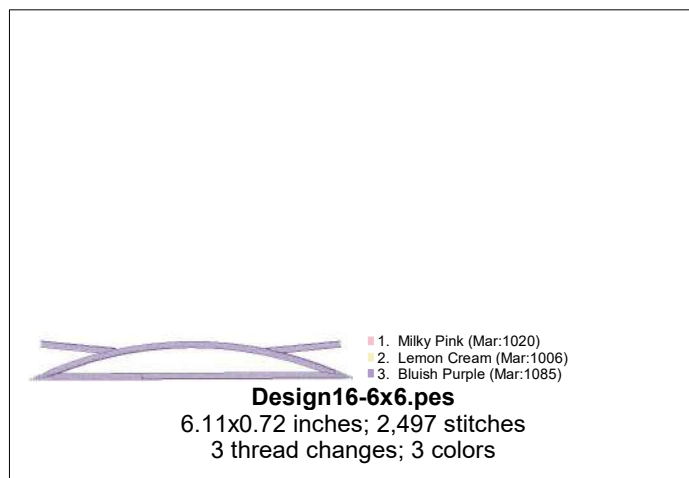
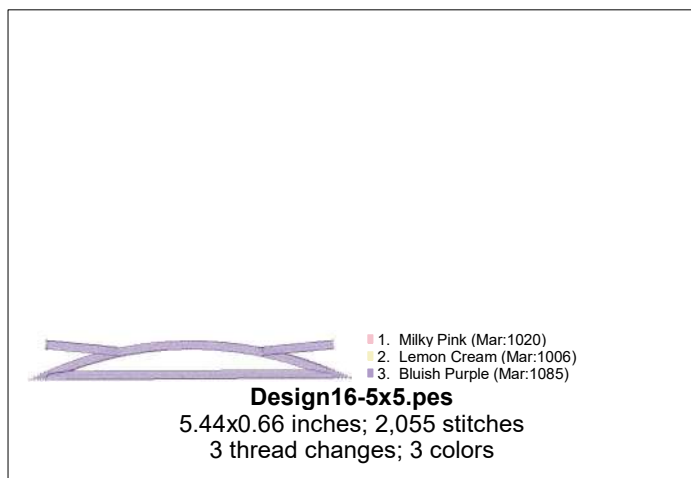
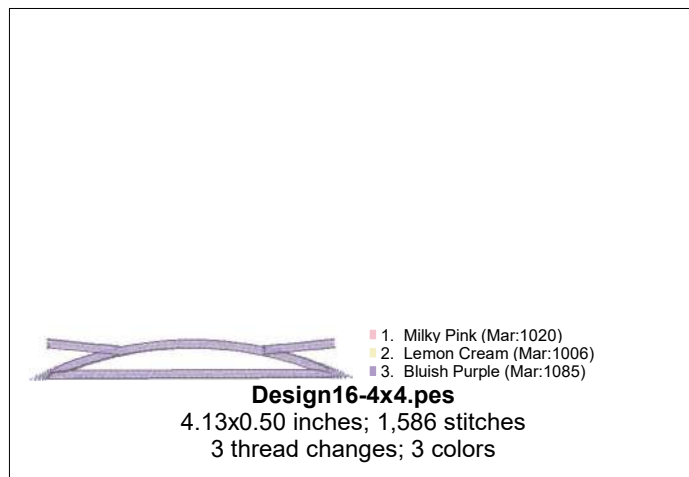
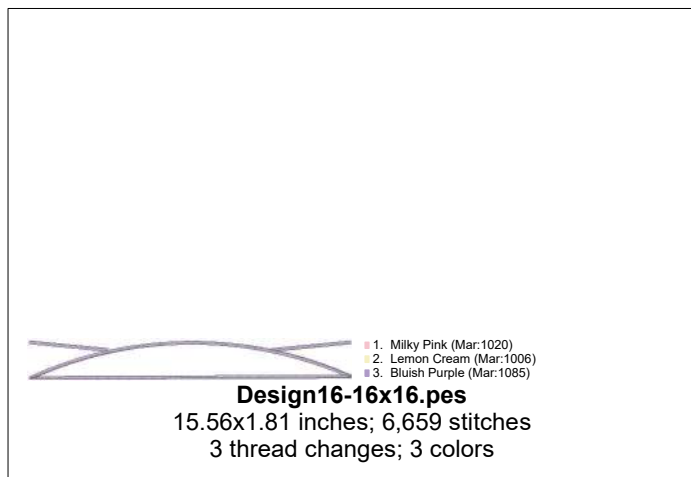
Design15-13x13.pes
12.99x12.99 inches; 18,863 stitches
1 thread changes; 1 colors




- 1. Sage Cream (Mar:1182)

Design15-16x16.pes
15.55x15.55 inches; 20,431 stitches
1 thread changes; 1 colors








- 1. Milky Pink (Mar:1020)
- 2. Lemon Cream (Mar:1006)
- 3. Bluish Purple (Mar:1085)

Design17-13x13.pes
1.50x13.01 inches; 4,503 stitches
3 thread changes; 3 colors




- 1. Milky Pink (Mar:1020)
- 2. Lemon Cream (Mar:1006)
- 3. Bluish Purple (Mar:1085)

Design17-16x16.pes
1.79x15.57 inches; 5,385 stitches
3 thread changes; 3 colors




- 1. Milky Pink (Mar:1020)
- 2. Lemon Cream (Mar:1006)
- 3. Bluish Purple (Mar:1085)

Design17-4x4.pes
0.50x4.13 inches; 1,320 stitches
3 thread changes; 3 colors



- 1. Milky Pink (Mar:1020)
- 2. Lemon Cream (Mar:1006)
- 3. Bluish Purple (Mar:1085)

Design17-5x5.pes
0.62x5.31 inches; 1,722 stitches
3 thread changes; 3 colors



- 1. Milky Pink (Mar:1020)
- 2. Lemon Cream (Mar:1006)
- 3. Bluish Purple (Mar:1085)

Design17-6x6.pes
0.71x6.09 inches; 1,992 stitches
3 thread changes; 3 colors




- 1. Milky Pink (Mar:1020)
- 2. Lemon Cream (Mar:1006)
- 3. Bluish Purple (Mar:1085)

Design17-8x8.pes
0.92x7.69 inches; 2,690 stitches
3 thread changes; 3 colors




- 1. Milky Pink (Mar:1020)
- 2. Lemon Cream (Mar:1006)
- 3. Bluish Purple (Mar:1085)

Design17-9x9.pes
0.99x8.48 inches; 2,993 stitches
3 thread changes; 3 colors




- 1. Pink Cream (Mar:1227)
- 2. Lemon Cream (Mar:1006)
- 3. Dolphin Blue (Mar:1198)
- 4. Lemon Cream (Mar:1006)
- 5. Turquoise Blue (Mar:1059)
- 6. Lemon Cream (Mar:1006)
- 7. Bluish Purple (Mar:1085)
- 8. Lemon Cream (Mar:1006)
- 9. Bluish Purple (Mar:1085)
- 10. Lemon Cream (Mar:1006)
- 11. Bluish Purple (Mar:1085)
- 12. Lemon Cream (Mar:1006)
- 13. Silver Fox (Mar:1210)
- 14. Sage Cream (Mar:1182)
- 15. Lemon Cream (Mar:1006)
- 16. Mint Cream (Mar:1265)
- 17. Silver Fox (Mar:1210)
- 18. Off White (Mar:1181)

Design2-10x10.pes
9.61x9.65 inches; 51,363 stitches
18 thread changes; 9 colors




- 1. Pink Cream (Mar:1227)
- 2. Lemon Cream (Mar:1006)
- 3. Dolphin Blue (Mar:1198)
- 4. Lemon Cream (Mar:1006)
- 5. Turquoise Blue (Mar:1059)
- 6. Lemon Cream (Mar:1006)
- 7. Bluish Purple (Mar:1085)
- 8. Lemon Cream (Mar:1006)
- 9. Bluish Purple (Mar:1085)
- 10. Lemon Cream (Mar:1006)
- 11. Bluish Purple (Mar:1085)
- 12. Lemon Cream (Mar:1006)
- 13. Silver Fox (Mar:1210)
- 14. Sage Cream (Mar:1182)
- 15. Lemon Cream (Mar:1006)
- 16. Mint Cream (Mar:1265)
- 17. Silver Fox (Mar:1210)
- 18. Off White (Mar:1181)

Design2-12x12.pes
11.57x11.62 inches; 61,163 stitches
18 thread changes; 9 colors




- 1. Pink Cream (Mar:1227)
- 2. Lemon Cream (Mar:1006)
- 3. Dolphin Blue (Mar:1198)
- 4. Lemon Cream (Mar:1006)
- 5. Turquoise Blue (Mar:1059)
- 6. Lemon Cream (Mar:1006)
- 7. Bluish Purple (Mar:1085)
- 8. Lemon Cream (Mar:1006)
- 9. Bluish Purple (Mar:1085)
- 10. Lemon Cream (Mar:1006)
- 11. Bluish Purple (Mar:1085)
- 12. Lemon Cream (Mar:1006)
- 13. Silver Fox (Mar:1210)
- 14. Sage Cream (Mar:1182)
- 15. Lemon Cream (Mar:1006)
- 16. Mint Cream (Mar:1265)
- 17. Silver Fox (Mar:1210)
- 18. Off White (Mar:1181)

Design2-13x13.pes
12.94x13.00 inches; 69,029 stitches
18 thread changes; 9 colors




- 1. Pink Cream (Mar:1227)
- 2. Lemon Cream (Mar:1006)
- 3. Dolphin Blue (Mar:1198)
- 4. Lemon Cream (Mar:1006)
- 5. Turquoise Blue (Mar:1059)
- 6. Lemon Cream (Mar:1006)
- 7. Bluish Purple (Mar:1085)
- 8. Lemon Cream (Mar:1006)
- 9. Bluish Purple (Mar:1085)
- 10. Lemon Cream (Mar:1006)
- 11. Bluish Purple (Mar:1085)
- 12. Lemon Cream (Mar:1006)
- 13. Silver Fox (Mar:1210)
- 14. Sage Cream (Mar:1182)
- 15. Lemon Cream (Mar:1006)
- 16. Mint Cream (Mar:1265)
- 17. Silver Fox (Mar:1210)
- 18. Off White (Mar:1181)

Design2-16x16.pes
15.50x15.56 inches; 89,620 stitches
18 thread changes; 9 colors



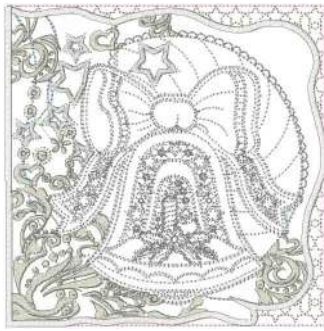
- 1. Pink Cream (Mar:1227)
- 2. Lemon Cream (Mar:1006)
- 3. Dolphin Blue (Mar:1198)
- 4. Lemon Cream (Mar:1006)
- 5. Turquoise Blue (Mar:1059)
- 6. Lemon Cream (Mar:1006)
- 7. Bluish Purple (Mar:1085)
- 8. Lemon Cream (Mar:1006)
- 9. Bluish Purple (Mar:1085)
- 10. Lemon Cream (Mar:1006)
- 11. Bluish Purple (Mar:1085)
- 12. Lemon Cream (Mar:1006)
- 13. Silver Fox (Mar:1210)
- 14. Sage Cream (Mar:1182)
- 15. Lemon Cream (Mar:1006)
- 16. Mint Cream (Mar:1265)
- 17. Silver Fox (Mar:1210)
- 18. Off White (Mar:1181)

Design2-4x4.pes
3.75x3.76 inches; 23,257 stitches
18 thread changes; 9 colors



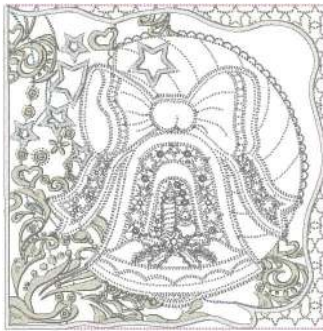
- 1. Pink Cream (Mar:1227)
- 2. Lemon Cream (Mar:1006)
- 3. Dolphin Blue (Mar:1198)
- 4. Lemon Cream (Mar:1006)
- 5. Turquoise Blue (Mar:1059)
- 6. Lemon Cream (Mar:1006)
- 7. Bluish Purple (Mar:1085)
- 8. Lemon Cream (Mar:1006)
- 9. Bluish Purple (Mar:1085)
- 10. Lemon Cream (Mar:1006)
- 11. Bluish Purple (Mar:1085)
- 12. Lemon Cream (Mar:1006)
- 13. Silver Fox (Mar:1210)
- 14. Sage Cream (Mar:1182)
- 15. Lemon Cream (Mar:1006)
- 16. Mint Cream (Mar:1265)
- 17. Silver Fox (Mar:1210)
- 18. Off White (Mar:1181)

Design2-5x5.pes
4.92x4.94 inches; 28,417 stitches
18 thread changes; 9 colors



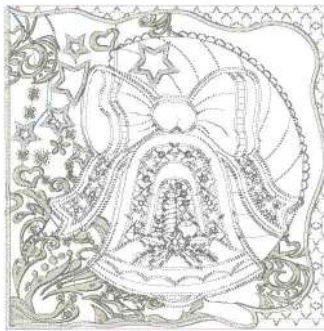
- 1. Pink Cream (Mar:1227)
- 2. Lemon Cream (Mar:1006)
- 3. Dolphin Blue (Mar:1198)
- 4. Lemon Cream (Mar:1006)
- 5. Turquoise Blue (Mar:1059)
- 6. Lemon Cream (Mar:1006)
- 7. Bluish Purple (Mar:1085)
- 8. Lemon Cream (Mar:1006)
- 9. Bluish Purple (Mar:1085)
- 10. Lemon Cream (Mar:1006)
- 11. Bluish Purple (Mar:1085)
- 12. Lemon Cream (Mar:1006)
- 13. Silver Fox (Mar:1210)
- 14. Sage Cream (Mar:1182)
- 15. Lemon Cream (Mar:1006)
- 16. Mint Cream (Mar:1265)
- 17. Silver Fox (Mar:1210)
- 18. Off White (Mar:1181)

Design2-6x6.pes
5.71x5.72 inches; 32,004 stitches
18 thread changes; 9 colors



- 1. Pink Cream (Mar:1227)
- 2. Lemon Cream (Mar:1006)
- 3. Dolphin Blue (Mar:1198)
- 4. Lemon Cream (Mar:1006)
- 5. Turquoise Blue (Mar:1059)
- 6. Lemon Cream (Mar:1006)
- 7. Bluish Purple (Mar:1085)
- 8. Lemon Cream (Mar:1006)
- 9. Bluish Purple (Mar:1085)
- 10. Lemon Cream (Mar:1006)
- 11. Bluish Purple (Mar:1085)
- 12. Lemon Cream (Mar:1006)
- 13. Silver Fox (Mar:1210)
- 14. Sage Cream (Mar:1182)
- 15. Lemon Cream (Mar:1006)
- 16. Mint Cream (Mar:1265)
- 17. Silver Fox (Mar:1210)
- 18. Off White (Mar:1181)

Design2-8x8.pes
7.65x7.69 inches; 41,763 stitches
18 thread changes; 9 colors



- 1. Pink Cream (Mar:1227)
- 2. Lemon Cream (Mar:1006)
- 3. Dolphin Blue (Mar:1198)
- 4. Lemon Cream (Mar:1006)
- 5. Turquoise Blue (Mar:1059)
- 6. Lemon Cream (Mar:1006)
- 7. Bluish Purple (Mar:1085)
- 8. Lemon Cream (Mar:1006)
- 9. Bluish Purple (Mar:1085)
- 10. Lemon Cream (Mar:1006)
- 11. Bluish Purple (Mar:1085)
- 12. Lemon Cream (Mar:1006)
- 13. Silver Fox (Mar:1210)
- 14. Sage Cream (Mar:1182)
- 15. Lemon Cream (Mar:1006)
- 16. Mint Cream (Mar:1265)
- 17. Silver Fox (Mar:1210)
- 18. Off White (Mar:1181)

Design2-9x9.pes
8.44x8.47 inches; 45,614 stitches
18 thread changes; 9 colors



- 1. Pink Cream (Mar:1227)
- 2. Lemon Cream (Mar:1006)
- 3. Dolphin Blue (Mar:1198)
- 4. Lemon Cream (Mar:1006)
- 5. Torquoise Blue (Mar:1059)
- 6. Lemon Cream (Mar:1006)
- 7. Bluish Purple (Mar:1085)
- 8. Lemon Cream (Mar:1006)
- 9. Silver Fox (Mar:1210)
- 10. Sage Cream (Mar:1182)
- 11. Lemon Cream (Mar:1006)
- 12. Mint Cream (Mar:1265)
- 13. Silver Fox (Mar:1210)
- 14. Off White (Mar:1181)

Design3-10x10.pes

9.66x9.65 inches; 57,966 stitches
14 thread changes; 9 colors



- 1. Pink Cream (Mar:1227)
- 2. Lemon Cream (Mar:1006)
- 3. Dolphin Blue (Mar:1198)
- 4. Lemon Cream (Mar:1006)
- 5. Torquoise Blue (Mar:1059)
- 6. Lemon Cream (Mar:1006)
- 7. Bluish Purple (Mar:1085)
- 8. Lemon Cream (Mar:1006)
- 9. Silver Fox (Mar:1210)
- 10. Sage Cream (Mar:1182)
- 11. Lemon Cream (Mar:1006)
- 12. Mint Cream (Mar:1265)
- 13. Silver Fox (Mar:1210)
- 14. Off White (Mar:1181)

Design3-12x12.pes

11.63x11.62 inches; 70,432 stitches
14 thread changes; 9 colors



- 1. Pink Cream (Mar:1227)
- 2. Lemon Cream (Mar:1006)
- 3. Dolphin Blue (Mar:1198)
- 4. Lemon Cream (Mar:1006)
- 5. Torquoise Blue (Mar:1059)
- 6. Lemon Cream (Mar:1006)
- 7. Bluish Purple (Mar:1085)
- 8. Lemon Cream (Mar:1006)
- 9. Silver Fox (Mar:1210)
- 10. Sage Cream (Mar:1182)
- 11. Lemon Cream (Mar:1006)
- 12. Mint Cream (Mar:1265)
- 13. Silver Fox (Mar:1210)
- 14. Off White (Mar:1181)

Design3-13x13.pes

13.01x13.00 inches; 83,763 stitches
14 thread changes; 9 colors



- 1. Pink Cream (Mar:1227)
- 2. Lemon Cream (Mar:1006)
- 3. Dolphin Blue (Mar:1198)
- 4. Lemon Cream (Mar:1006)
- 5. Torquoise Blue (Mar:1059)
- 6. Lemon Cream (Mar:1006)
- 7. Bluish Purple (Mar:1085)
- 8. Lemon Cream (Mar:1006)
- 9. Silver Fox (Mar:1210)
- 10. Sage Cream (Mar:1182)
- 11. Lemon Cream (Mar:1006)
- 12. Mint Cream (Mar:1265)
- 13. Silver Fox (Mar:1210)
- 14. Off White (Mar:1181)

Design3-16x16.pes

15.57x15.56 inches; 105,599 stitches
14 thread changes; 9 colors



- 1. Pink Cream (Mar:1227)
- 2. Lemon Cream (Mar:1006)
- 3. Dolphin Blue (Mar:1198)
- 4. Lemon Cream (Mar:1006)
- 5. Torquoise Blue (Mar:1059)
- 6. Lemon Cream (Mar:1006)
- 7. Bluish Purple (Mar:1085)
- 8. Lemon Cream (Mar:1006)
- 9. Silver Fox (Mar:1210)
- 10. Sage Cream (Mar:1182)
- 11. Lemon Cream (Mar:1006)
- 12. Mint Cream (Mar:1265)
- 13. Silver Fox (Mar:1210)
- 14. Off White (Mar:1181)

Design3-4x4.pes

3.76x3.76 inches; 24,656 stitches
14 thread changes; 9 colors



- 1. Pink Cream (Mar:1227)
- 2. Lemon Cream (Mar:1006)
- 3. Dolphin Blue (Mar:1198)
- 4. Lemon Cream (Mar:1006)
- 5. Torquoise Blue (Mar:1059)
- 6. Lemon Cream (Mar:1006)
- 7. Bluish Purple (Mar:1085)
- 8. Lemon Cream (Mar:1006)
- 9. Silver Fox (Mar:1210)
- 10. Sage Cream (Mar:1182)
- 11. Lemon Cream (Mar:1006)
- 12. Mint Cream (Mar:1265)
- 13. Silver Fox (Mar:1210)
- 14. Off White (Mar:1181)

Design3-5x5.pes

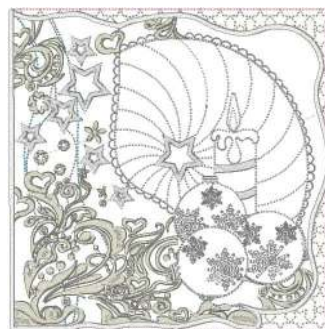
4.94x4.94 inches; 31,146 stitches
14 thread changes; 9 colors



- 1. Pink Cream (Mar:1227)
- 2. Lemon Cream (Mar:1006)
- 3. Dolphin Blue (Mar:1198)
- 4. Lemon Cream (Mar:1006)
- 5. Torquoise Blue (Mar:1059)
- 6. Lemon Cream (Mar:1006)
- 7. Bluish Purple (Mar:1085)
- 8. Lemon Cream (Mar:1006)
- 9. Silver Fox (Mar:1210)
- 10. Sage Cream (Mar:1182)
- 11. Lemon Cream (Mar:1006)
- 12. Mint Cream (Mar:1265)
- 13. Silver Fox (Mar:1210)
- 14. Off White (Mar:1181)

Design3-6x6.pes

5.72x5.72 inches; 35,688 stitches
14 thread changes; 9 colors



- 1. Pink Cream (Mar:1227)
- 2. Lemon Cream (Mar:1006)
- 3. Dolphin Blue (Mar:1198)
- 4. Lemon Cream (Mar:1006)
- 5. Torquoise Blue (Mar:1059)
- 6. Lemon Cream (Mar:1006)
- 7. Bluish Purple (Mar:1085)
- 8. Lemon Cream (Mar:1006)
- 9. Silver Fox (Mar:1210)
- 10. Sage Cream (Mar:1182)
- 11. Lemon Cream (Mar:1006)
- 12. Mint Cream (Mar:1265)
- 13. Silver Fox (Mar:1210)
- 14. Off White (Mar:1181)

Design3-8x8.pes

7.69x7.69 inches; 47,024 stitches
14 thread changes; 9 colors




- 1. Pink Cream (Mar:1227)
- 2. Lemon Cream (Mar:1006)
- 3. Dolphin Blue (Mar:1198)
- 4. Lemon Cream (Mar:1006)
- 5. Torquoise Blue (Mar:1059)
- 6. Lemon Cream (Mar:1006)
- 7. Bluish Purple (Mar:1085)
- 8. Lemon Cream (Mar:1006)
- 9. Silver Fox (Mar:1210)
- 10. Sage Cream (Mar:1182)
- 11. Lemon Cream (Mar:1006)
- 12. Mint Cream (Mar:1265)
- 13. Silver Fox (Mar:1210)
- 14. Off White (Mar:1181)

Design3-9x9.pes
8.48x8.47 inches; 51,448 stitches
14 thread changes; 9 colors




- 1. Off White (Mar:1181)
- 2. Minted Blue (Mar:1062)
- 3. Bluish Purple (Mar:1085)
- 4. Dolphin Blue (Mar:1198)
- 5. Torquoise Blue (Mar:1059)
- 6. Tinted Gray (Mar:1174)

Design4-4x4.pes
3.98x3.75 inches; 16,599 stitches
6 thread changes; 6 colors




- 1. Off White (Mar:1181)
- 2. Minted Blue (Mar:1062)
- 3. Bluish Purple (Mar:1085)
- 4. Dolphin Blue (Mar:1198)
- 5. Torquoise Blue (Mar:1059)
- 6. Tinted Gray (Mar:1174)

Design4-5x5.pes
5.23x4.93 inches; 22,936 stitches
6 thread changes; 6 colors




- 1. Off White (Mar:1181)
- 2. Minted Blue (Mar:1062)
- 3. Bluish Purple (Mar:1085)
- 4. Dolphin Blue (Mar:1198)
- 5. Torquoise Blue (Mar:1059)
- 6. Tinted Gray (Mar:1174)

Design4-6x6.pes
6.06x5.72 inches; 28,028 stitches
6 thread changes; 6 colors




- 1. Off White (Mar:1181)
- 2. Minted Blue (Mar:1062)
- 3. Bluish Purple (Mar:1085)
- 4. Dolphin Blue (Mar:1198)
- 5. Torquoise Blue (Mar:1059)
- 6. Tinted Gray (Mar:1174)

Design4-8x8 - Copy.pes
8.15x7.69 inches; 43,240 stitches
6 thread changes; 6 colors




- 1. Off White (Mar:1181)
- 2. Minted Blue (Mar:1062)
- 3. Bluish Purple (Mar:1085)
- 4. Dolphin Blue (Mar:1198)
- 5. Torquoise Blue (Mar:1059)
- 6. Tinted Gray (Mar:1174)

Design4-8x8.pes
8.15x7.69 inches; 43,240 stitches
6 thread changes; 6 colors



- 1. Off White (Mar:1181)
- 2. Minted Blue (Mar:1062)
- 3. Dolphin Blue (Mar:1198)
- 4. Torquoise Blue (Mar:1059)
- 5. Bluish Purple (Mar:1085)
- 6. Tinted Gray (Mar:1174)
- 7. Silver Fox (Mar:1210)
- 8. Lemon Cream (Mar:1006)
- 9. Mint Cream (Mar:1265)
- 10. Off White (Mar:1181)

Design5-4x4.pes
2.91x3.73 inches; 11,344 stitches
10 thread changes; 9 colors



- 1. Off White (Mar:1181)
- 2. Minted Blue (Mar:1062)
- 3. Dolphin Blue (Mar:1198)
- 4. Torquoise Blue (Mar:1059)
- 5. Bluish Purple (Mar:1085)
- 6. Tinted Gray (Mar:1174)
- 7. Silver Fox (Mar:1210)
- 8. Lemon Cream (Mar:1006)
- 9. Mint Cream (Mar:1265)
- 10. Off White (Mar:1181)

Design5-5x5.pes
3.83x4.92 inches; 15,925 stitches
10 thread changes; 9 colors



- 1. Off White (Mar:1181)
- 2. Minted Blue (Mar:1062)
- 3. Dolphin Blue (Mar:1198)
- 4. Turquoise Blue (Mar:1059)
- 5. Bluish Purple (Mar:1085)
- 6. Tinted Gray (Mar:1174)
- 7. Silver Fox (Mar:1210)
- 8. Lemon Cream (Mar:1006)
- 9. Mint Cream (Mar:1265)
- 10. Off White (Mar:1181)

Design5-6x6.pes
 4.44x5.71 inches; 19,427 stitches
 10 thread changes; 9 colors



- 1. Off White (Mar:1181)
- 2. Minted Blue (Mar:1062)
- 3. Dolphin Blue (Mar:1198)
- 4. Turquoise Blue (Mar:1059)
- 5. Bluish Purple (Mar:1085)
- 6. Tinted Gray (Mar:1174)
- 7. Silver Fox (Mar:1210)
- 8. Lemon Cream (Mar:1006)
- 9. Mint Cream (Mar:1265)
- 10. Off White (Mar:1181)

Design5-8x8 - Copy.pes
 5.97x7.68 inches; 33,643 stitches
 10 thread changes; 9 colors



- 1. Off White (Mar:1181)
- 2. Minted Blue (Mar:1062)
- 3. Dolphin Blue (Mar:1198)
- 4. Turquoise Blue (Mar:1059)
- 5. Bluish Purple (Mar:1085)
- 6. Tinted Gray (Mar:1174)
- 7. Silver Fox (Mar:1210)
- 8. Lemon Cream (Mar:1006)
- 9. Mint Cream (Mar:1265)
- 10. Off White (Mar:1181)

Design5-8x8.pes
 5.97x7.68 inches; 33,643 stitches
 10 thread changes; 9 colors



- 1. Off White (Mar:1181)
- 2. Minted Blue (Mar:1062)
- 3. Bluish Purple (Mar:1085)
- 4. Turquoise Blue (Mar:1059)
- 5. Dolphin Blue (Mar:1198)
- 6. Tinted Gray (Mar:1174)

Design6-4x4.pes
 2.83x3.75 inches; 13,705 stitches
 6 thread changes; 6 colors



- 1. Off White (Mar:1181)
- 2. Minted Blue (Mar:1062)
- 3. Bluish Purple (Mar:1085)
- 4. Turquoise Blue (Mar:1059)
- 5. Dolphin Blue (Mar:1198)
- 6. Tinted Gray (Mar:1174)

Design6-5x5.pes
 3.71x4.93 inches; 19,533 stitches
 6 thread changes; 6 colors



- 1. Off White (Mar:1181)
- 2. Minted Blue (Mar:1062)
- 3. Bluish Purple (Mar:1085)
- 4. Turquoise Blue (Mar:1059)
- 5. Dolphin Blue (Mar:1198)
- 6. Tinted Gray (Mar:1174)

Design6-6x6.pes
 4.31x5.72 inches; 23,901 stitches
 6 thread changes; 6 colors



- 1. Off White (Mar:1181)
- 2. Minted Blue (Mar:1062)
- 3. Bluish Purple (Mar:1085)
- 4. Turquoise Blue (Mar:1059)
- 5. Dolphin Blue (Mar:1198)
- 6. Tinted Gray (Mar:1174)

Design6-8x8.pes
 5.79x7.69 inches; 37,906 stitches
 6 thread changes; 6 colors



- 1. Pink Cream (Mar:1227)
- 2. Lemon Cream (Mar:1006)
- 3. Dolphin Blue (Mar:1198)
- 4. Lemon Cream (Mar:1006)
- 5. Turquoise Blue (Mar:1059)
- 6. Lemon Cream (Mar:1006)
- 7. Bluish Purple (Mar:1085)
- 8. Lemon Cream (Mar:1006)
- 9. Silver Fox (Mar:1210)
- 10. Sage Cream (Mar:1182)
- 11. Lemon Cream (Mar:1006)
- 12. Mint Cream (Mar:1265)
- 13. Silver Fox (Mar:1210)
- 14. Off White (Mar:1181)

Design7-10x10.pes
 9.66x9.65 inches; 56,162 stitches
 14 thread changes; 9 colors



- 1. Pink Cream (Mar:1227)
- 2. Lemon Cream (Mar:1006)
- 3. Dolphin Blue (Mar:1198)
- 4. Lemon Cream (Mar:1006)
- 5. Turquoise Blue (Mar:1059)
- 6. Lemon Cream (Mar:1006)
- 7. Bluish Purple (Mar:1085)
- 8. Lemon Cream (Mar:1006)
- 9. Silver Fox (Mar:1210)
- 10. Sage Cream (Mar:1182)
- 11. Lemon Cream (Mar:1006)
- 12. Mint Cream (Mar:1265)
- 13. Silver Fox (Mar:1210)
- 14. Off White (Mar:1181)

Design7-12x12.pes

11.63x11.61 inches; 68,039 stitches
14 thread changes; 9 colors



- 1. Pink Cream (Mar:1227)
- 2. Lemon Cream (Mar:1006)
- 3. Dolphin Blue (Mar:1198)
- 4. Lemon Cream (Mar:1006)
- 5. Turquoise Blue (Mar:1059)
- 6. Lemon Cream (Mar:1006)
- 7. Bluish Purple (Mar:1085)
- 8. Lemon Cream (Mar:1006)
- 9. Silver Fox (Mar:1210)
- 10. Sage Cream (Mar:1182)
- 11. Lemon Cream (Mar:1006)
- 12. Mint Cream (Mar:1265)
- 13. Silver Fox (Mar:1210)
- 14. Off White (Mar:1181)

Design7-13x13.pes

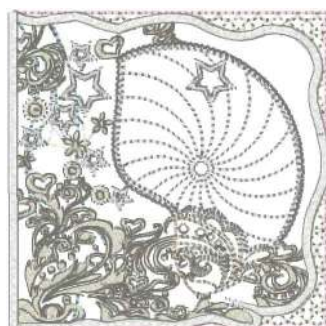
13.01x12.99 inches; 78,510 stitches
14 thread changes; 9 colors



- 1. Pink Cream (Mar:1227)
- 2. Lemon Cream (Mar:1006)
- 3. Dolphin Blue (Mar:1198)
- 4. Lemon Cream (Mar:1006)
- 5. Turquoise Blue (Mar:1059)
- 6. Lemon Cream (Mar:1006)
- 7. Bluish Purple (Mar:1085)
- 8. Lemon Cream (Mar:1006)
- 9. Silver Fox (Mar:1210)
- 10. Sage Cream (Mar:1182)
- 11. Lemon Cream (Mar:1006)
- 12. Mint Cream (Mar:1265)
- 13. Silver Fox (Mar:1210)
- 14. Off White (Mar:1181)

Design7-16x16.pes

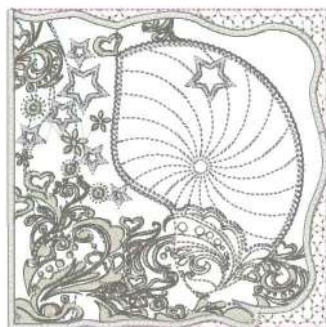
15.57x15.55 inches; 97,720 stitches
14 thread changes; 9 colors



- 1. Pink Cream (Mar:1227)
- 2. Lemon Cream (Mar:1006)
- 3. Dolphin Blue (Mar:1198)
- 4. Lemon Cream (Mar:1006)
- 5. Turquoise Blue (Mar:1059)
- 6. Lemon Cream (Mar:1006)
- 7. Bluish Purple (Mar:1085)
- 8. Sage Cream (Mar:1182)
- 9. Lemon Cream (Mar:1006)
- 10. Silver Fox (Mar:1210)
- 11. Lemon Cream (Mar:1006)
- 12. Mint Cream (Mar:1265)
- 13. Silver Fox (Mar:1210)
- 14. Off White (Mar:1181)

Design7-4x4.pes

3.76x3.76 inches; 23,289 stitches
14 thread changes; 9 colors



- 1. Pink Cream (Mar:1227)
- 2. Lemon Cream (Mar:1006)
- 3. Dolphin Blue (Mar:1198)
- 4. Lemon Cream (Mar:1006)
- 5. Turquoise Blue (Mar:1059)
- 6. Lemon Cream (Mar:1006)
- 7. Bluish Purple (Mar:1085)
- 8. Sage Cream (Mar:1182)
- 9. Lemon Cream (Mar:1006)
- 10. Silver Fox (Mar:1210)
- 11. Lemon Cream (Mar:1006)
- 12. Mint Cream (Mar:1265)
- 13. Silver Fox (Mar:1210)
- 14. Off White (Mar:1181)

Design7-5x5.pes

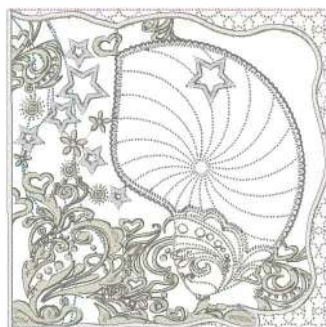
4.94x4.94 inches; 29,574 stitches
14 thread changes; 9 colors



- 1. Pink Cream (Mar:1227)
- 2. Lemon Cream (Mar:1006)
- 3. Dolphin Blue (Mar:1198)
- 4. Lemon Cream (Mar:1006)
- 5. Turquoise Blue (Mar:1059)
- 6. Lemon Cream (Mar:1006)
- 7. Bluish Purple (Mar:1085)
- 8. Sage Cream (Mar:1182)
- 9. Lemon Cream (Mar:1006)
- 10. Silver Fox (Mar:1210)
- 11. Lemon Cream (Mar:1006)
- 12. Mint Cream (Mar:1265)
- 13. Silver Fox (Mar:1210)
- 14. Off White (Mar:1181)

Design7-6x6.pes

5.72x5.72 inches; 34,167 stitches
14 thread changes; 9 colors



- 1. Pink Cream (Mar:1227)
- 2. Lemon Cream (Mar:1006)
- 3. Dolphin Blue (Mar:1198)
- 4. Lemon Cream (Mar:1006)
- 5. Turquoise Blue (Mar:1059)
- 6. Lemon Cream (Mar:1006)
- 7. Bluish Purple (Mar:1085)
- 8. Sage Cream (Mar:1182)
- 9. Lemon Cream (Mar:1006)
- 10. Silver Fox (Mar:1210)
- 11. Lemon Cream (Mar:1006)
- 12. Mint Cream (Mar:1265)
- 13. Silver Fox (Mar:1210)
- 14. Off White (Mar:1181)

Design7-8x8.pes

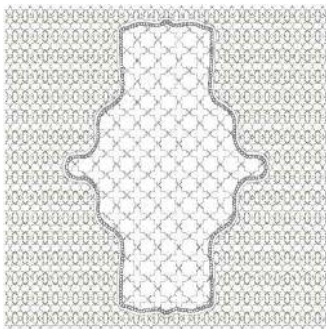
7.70x7.70 inches; 45,393 stitches
14 thread changes; 9 colors



- 1. Pink Cream (Mar:1227)
- 2. Lemon Cream (Mar:1006)
- 3. Dolphin Blue (Mar:1198)
- 4. Lemon Cream (Mar:1006)
- 5. Turquoise Blue (Mar:1059)
- 6. Lemon Cream (Mar:1006)
- 7. Bluish Purple (Mar:1085)
- 8. Sage Cream (Mar:1182)
- 9. Lemon Cream (Mar:1006)
- 10. Silver Fox (Mar:1210)
- 11. Lemon Cream (Mar:1006)
- 12. Mint Cream (Mar:1265)
- 13. Silver Fox (Mar:1210)
- 14. Off White (Mar:1181)

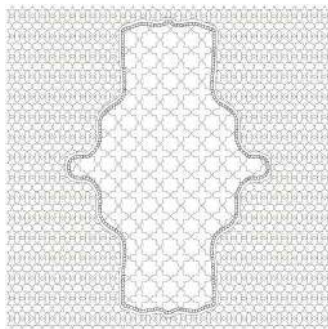
Design7-9x9.pes

8.48x8.48 inches; 49,679 stitches
14 thread changes; 9 colors



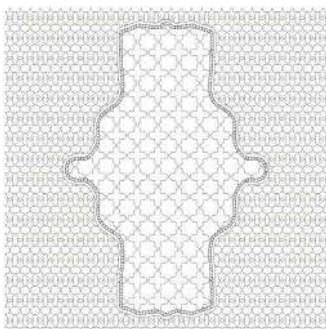
■ 1. Sage Cream (Mar:1182)
■ 2. Silver Fox (Mar:1210)

Design8-10x10.pes
9.65x9.65 inches; 43,348 stitches
2 thread changes; 2 colors



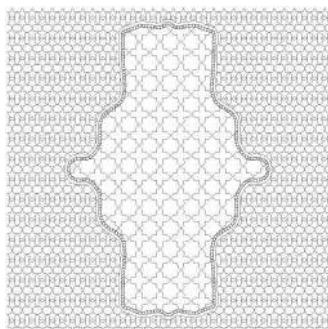
■ 1. Sage Cream (Mar:1182)
■ 2. Silver Fox (Mar:1210)

Design8-12x12.pes
11.61x11.61 inches; 45,781 stitches
2 thread changes; 2 colors



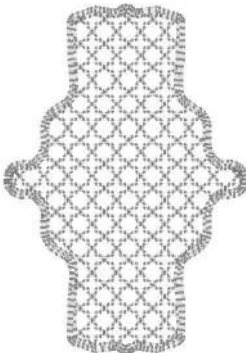
■ 1. Sage Cream (Mar:1182)
■ 2. Silver Fox (Mar:1210)

Design8-13x13.pes
12.99x12.99 inches; 47,057 stitches
2 thread changes; 2 colors



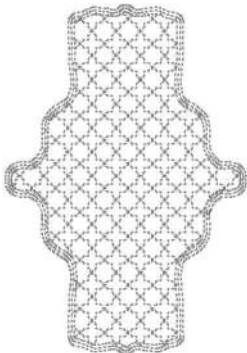
■ 1. Sage Cream (Mar:1182)
■ 2. Silver Fox (Mar:1210)

Design8-16x16.pes
15.55x15.55 inches; 63,182 stitches
2 thread changes; 2 colors



■ 1. Silver Fox (Mar:1210)

Design8-4x4.pes
2.57x3.74 inches; 3,823 stitches
1 thread changes; 1 colors



■ 1. Silver Fox (Mar:1210)

Design8-5x5.pes
3.39x4.92 inches; 4,081 stitches
1 thread changes; 1 colors



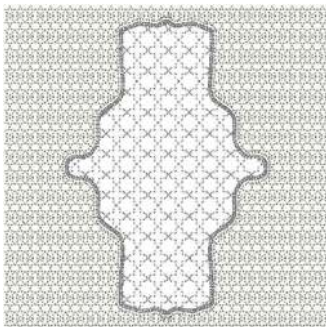
■ 1. Silver Fox (Mar:1210)

Design8-5x7.pes
4.92x7.14 inches; 6,991 stitches
1 thread changes; 1 colors



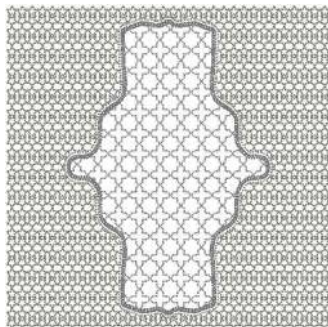
■ 1. Silver Fox (Mar:1210)

Design8-6x10.pes
5.71x8.28 inches; 7,247 stitches
1 thread changes; 1 colors



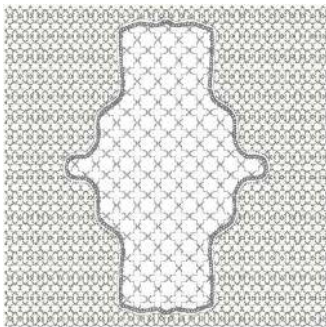
■ 1. Sage Cream (Mar:1182)
■ 2. Silver Fox (Mar:1210)

Design8-6x6.pes
5.71x5.71 inches; 25,179 stitches
2 thread changes; 2 colors



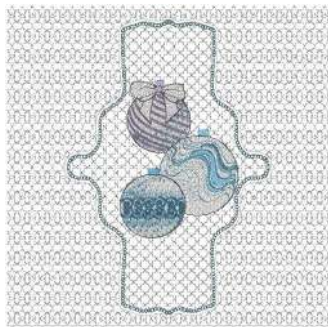
■ 1. Sage Cream (Mar:1182)
■ 2. Silver Fox (Mar:1210)

Design8-8x8.pes
7.68x7.68 inches; 42,126 stitches
2 thread changes; 2 colors



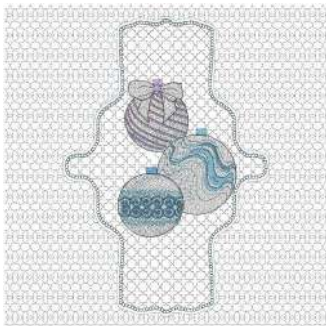
■ 1. Sage Cream (Mar:1182)
■ 2. Silver Fox (Mar:1210)

Design8-9x9.pes
8.46x8.46 inches; 42,542 stitches
2 thread changes; 2 colors




■ 1. Off White (Mar:1181)
■ 2. Torquoise Blue (Mar:1059)
■ 3. Silver Fox (Mar:1210)
■ 4. Off White (Mar:1181)
■ 5. Minted Blue (Mar:1062)
■ 6. Bluish Purple (Mar:1085)
■ 7. Torquoise Blue (Mar:1059)
■ 8. Dolphin Blue (Mar:1198)
■ 9. Lead (Mar:1213)

Design9-10x10.pes
9.65x9.65 inches; 68,095 stitches
9 thread changes; 7 colors




■ 1. Off White (Mar:1181)
■ 2. Torquoise Blue (Mar:1059)
■ 3. Silver Fox (Mar:1210)
■ 4. Off White (Mar:1181)
■ 5. Minted Blue (Mar:1062)
■ 6. Bluish Purple (Mar:1085)
■ 7. Torquoise Blue (Mar:1059)
■ 8. Dolphin Blue (Mar:1198)
■ 9. Lead (Mar:1213)

Design9-12x12.pes
11.61x11.61 inches; 80,190 stitches
9 thread changes; 7 colors



■ 1. Off White (Mar:1181)
■ 2. Torquoise Blue (Mar:1059)
■ 3. Silver Fox (Mar:1210)
■ 4. Off White (Mar:1181)
■ 5. Minted Blue (Mar:1062)
■ 6. Bluish Purple (Mar:1085)
■ 7. Torquoise Blue (Mar:1059)
■ 8. Dolphin Blue (Mar:1198)
■ 9. Lead (Mar:1213)

Design9-13x13.pes
12.99x12.99 inches; 88,338 stitches
9 thread changes; 7 colors



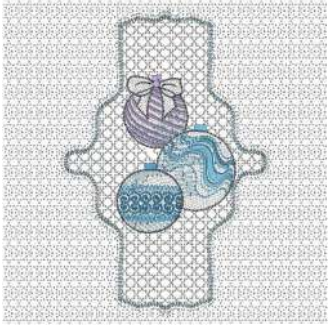
■ 1. Off White (Mar:1181)
■ 2. Torquoise Blue (Mar:1059)
■ 3. Silver Fox (Mar:1210)
■ 4. Off White (Mar:1181)
■ 5. Minted Blue (Mar:1062)
■ 6. Bluish Purple (Mar:1085)
■ 7. Torquoise Blue (Mar:1059)
■ 8. Dolphin Blue (Mar:1198)
■ 9. Lead (Mar:1213)

Design9-16x16.pes
15.55x15.55 inches; 111,708 stitches
9 thread changes; 7 colors



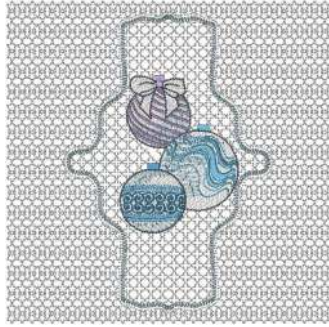
■ 1. Off White (Mar:1181)
■ 2. Silver Fox (Mar:1210)
■ 3. Off White (Mar:1181)
■ 4. Minted Blue (Mar:1062)
■ 5. Bluish Purple (Mar:1085)
■ 6. Torquoise Blue (Mar:1059)
■ 7. Dolphin Blue (Mar:1198)
■ 8. Lead (Mar:1213)

Design9-5x5.pes
4.92x4.92 inches; 32,255 stitches
8 thread changes; 7 colors



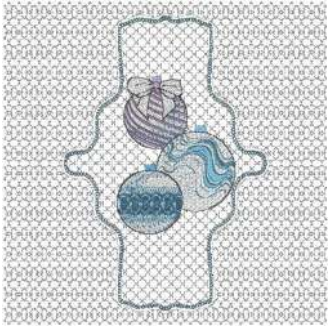
- 1. Off White (Mar:1181)
- 2. Turquoise Blue (Mar:1059)
- 3. Silver Fox (Mar:1210)
- 4. Off White (Mar:1181)
- 5. Minted Blue (Mar:1062)
- 6. Bluish Purple (Mar:1085)
- 7. Turquoise Blue (Mar:1059)
- 8. Dolphin Blue (Mar:1198)
- 9. Lead (Mar:1213)

Design9-6x6.pes
 5.71x5.71 inches; 40,553 stitches
 9 thread changes; 7 colors




- 1. Off White (Mar:1181)
- 2. Turquoise Blue (Mar:1059)
- 3. Silver Fox (Mar:1210)
- 4. Off White (Mar:1181)
- 5. Minted Blue (Mar:1062)
- 6. Bluish Purple (Mar:1085)
- 7. Turquoise Blue (Mar:1059)
- 8. Dolphin Blue (Mar:1198)
- 9. Lead (Mar:1213)

Design9-8x8.pes
 7.68x7.68 inches; 60,142 stitches
 9 thread changes; 7 colors



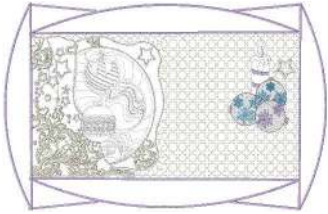
- 1. Off White (Mar:1181)
- 2. Turquoise Blue (Mar:1059)
- 3. Silver Fox (Mar:1210)
- 4. Off White (Mar:1181)
- 5. Minted Blue (Mar:1062)
- 6. Bluish Purple (Mar:1085)
- 7. Turquoise Blue (Mar:1059)
- 8. Dolphin Blue (Mar:1198)
- 9. Lead (Mar:1213)

Design9-9x9.pes
 8.46x8.46 inches; 62,903 stitches
 9 thread changes; 7 colors



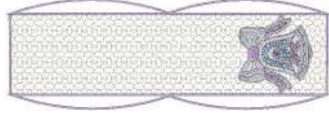
- 1. Ripe Lemon (Mar:1004)
- 2. Mint Cream (Mar:1265)
- 3. Off White (Mar:1181)
- 4. Minted Blue (Mar:1062)
- 5. Bluish Purple (Mar:1085)
- 6. Turquoise Blue (Mar:1059)
- 7. Dolphin Blue (Mar:1198)
- 8. Tinted Gray (Mar:1174)
- 9. Off White (Mar:1181)
- 10. Tinted Gray (Mar:1174)

Glass Decoration.pes
 9.07x3.80 inches; 21,585 stitches
 10 thread changes; 8 colors



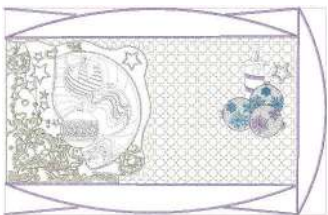
- 1. Lemon Cream (Mar:1006)
- 2. Dolphin Blue (Mar:1198)
- 3. Lemon Cream (Mar:1006)
- 4. Turquoise Blue (Mar:1059)
- 5. Lemon Cream (Mar:1006)
- 6. Bluish Purple (Mar:1085)
- 7. Lemon Cream (Mar:1006)
- 8. Off White (Mar:1181)
- 9. Sage Cream (Mar:1182)
- 10. Lemon Cream (Mar:1006)
- 11. Wheaten Green (Mar:1092)
- 12. Silver Fox (Mar:1210)
- 13. Off White (Mar:1181)
- 14. Sage Cream (Mar:1182)
- 15. Off White (Mar:1181)
- 16. Dolphin Blue (Mar:1198)
- 17. Turquoise Blue (Mar:1059)
- 18. Bluish Purple (Mar:1085)
- 19. Silver Fox (Mar:1210)
- 20. Tinted Gray (Mar:1174)
- 21. Lemon Cream (Mar:1006)
- 22. Mint Cream (Mar:1265)
- 23. Silver Fox (Mar:1210)
- 24. Lemon Cream (Mar:1006)
- 25. Bluish Purple (Mar:1085)
- 26. Lemon Cream (Mar:1006)
- 27. Bluish Purple (Mar:1085)
- 28. Lemon Cream (Mar:1006)
- 29. Bluish Purple (Mar:1085)

Placemat.pes
 19.70x12.69 inches; 102,398 stitches
 29 thread changes; 10 colors



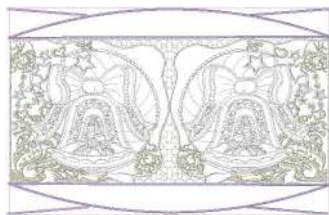
- 1. Sage Cream (Mar:1182)
- 2. Off White (Mar:1181)
- 3. Minted Blue (Mar:1062)
- 4. Bluish Purple (Mar:1085)
- 5. Dolphin Blue (Mar:1198)
- 6. Turquoise Blue (Mar:1059)
- 7. Tinted Gray (Mar:1174)
- 8. Lemon Cream (Mar:1006)
- 9. Pale Lawn (Mar:1119)
- 10. Bluish Purple (Mar:1085)

Sieviette.pes
 19.84x6.78 inches; 61,377 stitches
 10 thread changes; 9 colors



- 1. Pink Cream (Mar:1227)
- 2. Lemon Cream (Mar:1006)
- 3. Dolphin Blue (Mar:1198)
- 4. Lemon Cream (Mar:1006)
- 5. Turquoise Blue (Mar:1059)
- 6. Lemon Cream (Mar:1006)
- 7. Bluish Purple (Mar:1085)
- 8. Lemon Cream (Mar:1006)
- 9. Off White (Mar:1181)
- 10. Sage Cream (Mar:1182)
- 11. Lemon Cream (Mar:1006)
- 12. Wheaten Green (Mar:1092)
- 13. Silver Fox (Mar:1210)
- 14. Off White (Mar:1181)
- 15. Sage Cream (Mar:1182)
- 16. Off White (Mar:1181)
- 17. Dolphin Blue (Mar:1198)
- 18. Turquoise Blue (Mar:1059)
- 19. Bluish Purple (Mar:1085)
- 20. Silver Fox (Mar:1210)
- 21. Tinted Gray (Mar:1174)
- 22. Lemon Cream (Mar:1006)
- 23. Mint Cream (Mar:1265)
- 24. Silver Fox (Mar:1210)
- 25. Lemon Cream (Mar:1006)
- 26. Bluish Purple (Mar:1085)
- 27. Lemon Cream (Mar:1006)
- 28. Bluish Purple (Mar:1085)
- 29. Lemon Cream (Mar:1006)
- 30. Bluish Purple (Mar:1085)

Tablerunner.pes
 19.69x12.69 inches; 102,844 stitches
 30 thread changes; 11 colors



- 1. Pink Cream (Mar:1227)
- 2. Lemon Cream (Mar:1006)
- 3. Dolphin Blue (Mar:1198)
- 4. Lemon Cream (Mar:1006)
- 5. Turquoise Blue (Mar:1059)
- 6. Lemon Cream (Mar:1006)
- 7. Bluish Purple (Mar:1085)
- 8. Lemon Cream (Mar:1006)
- 9. Silver Fox (Mar:1210)
- 10. Sage Cream (Mar:1182)
- 11. Lemon Cream (Mar:1006)
- 12. Mint Cream (Mar:1265)
- 13. Silver Fox (Mar:1210)
- 14. Off White (Mar:1181)
- 15. Lemon Cream (Mar:1006)
- 16. Bluish Purple (Mar:1085)
- 17. Lemon Cream (Mar:1006)
- 18. Bluish Purple (Mar:1085)

Tablerunner1.pes
 19.65x12.63 inches; 114,754 stitches
 18 thread changes; 9 colors