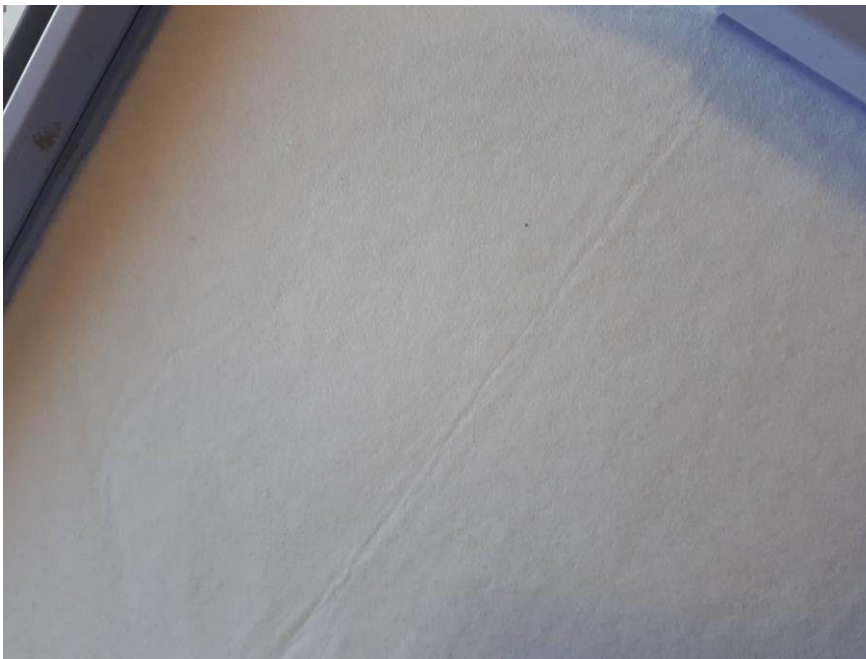


INFORMATION SHEET

- [?] Thread type used
- [?] Needle used
- [?] Fabric /Stabilizer used
- [?] Format you downloaded/purchased
- [?] Machine you are stitching the designs on

Design Code: DASS0098_Let's Blend

Design Type: Embroidery Design
Thread recommended: 40 Rayon Thread (Marathon) – Match bobbin colour
Fabric Recommended: Tear away and fabric of your choice (Cotton/Voile)
Needle size: 75/11
Other requirements: None
Special Notes: In this set you can play with layers of fabric of your own choice or colour.....as long as you use the same colour thread to stitch the background as the top layer of the fabric. In this case I used a white tulle(Netting for South Africans) and stitched my background in white



Hoop Tear away or cut away stabilizer. This is the only hooping



Float 1 or 2 layers of thin quilters batting...the soft one

You can secure with adhesive spray...I use 505 spray.

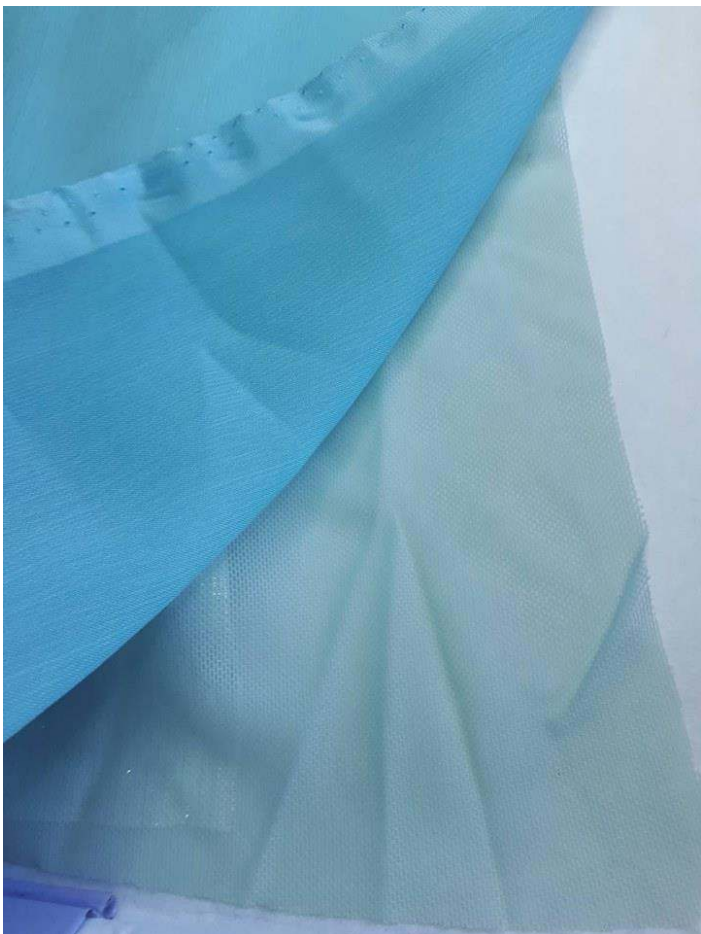
Do not hoop this....float it. It means it must be loose on top of the hooped stabilizer. You can also secure with pins but make sure it is not in the stitching area



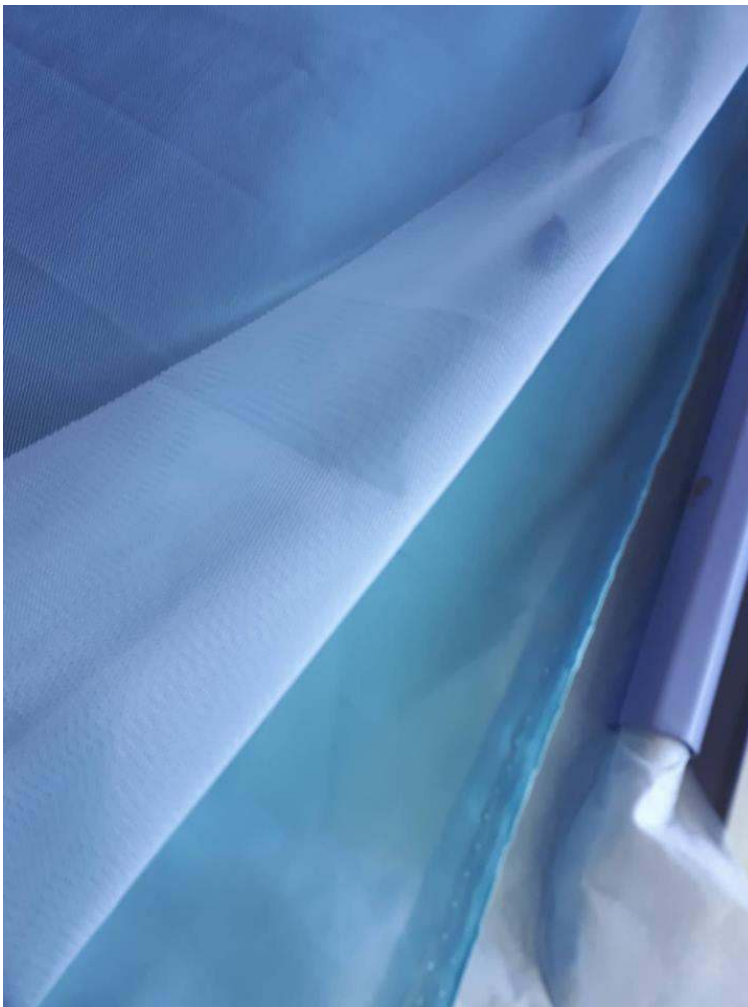
Use any stretch fabric....these are scuba and lycra . In my designs I used a shiny fabric. Lame satin can also be used



Next I layers a mint green Tulle (Netting) as seen in the picture

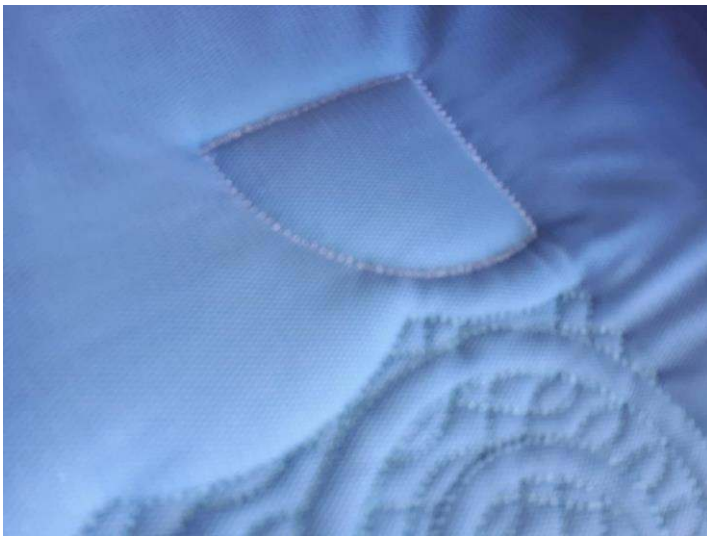


And for the tutorial only I used another shade of green Chiffon just to show the different affects you will get by cutting one layer only or two. If you layered more you can decide to cut through the layers you want to give the effect you need to see....this is a playful design set.



Then I layered a white Tulle (Netting) on top of the Chiffon.....and

I also stitched my background in the White.....As you will see in the design the first step is in a colour...so use any colour thread in the shades of the Tulle you layered with....in my case the greens. The background will be after you have cut out the pieces as seen in the next pictures.



This is to show the zigzag lines where you will do the cutting.

Note: the cutting will be on the inside of the design and not outside as if it is Applique.

See picture below



In this picture above I only cut through the white top layer of Tulle (Netting)



In this picture I cut both the white Tulle (Netting) and the green Chiffon to get 2 different shades in one design.

See picture below to see the 2 different shades



Final step is the satin outline in the same colour as your accent colour....in my case the mint green

Other Information

This design is distributed at DesignAStitch. The original copyright of the design is registered to DesignAStitch Pty Ltd. You may sell the projects

you make using these designs, but the designs in their original digital format is not to be shared, sold or distributed in any way. I do not recommend that you convert the designs in other formats as this might lead to poor quality in the converted format, please obtain the required format directly from me.

Kind Regards